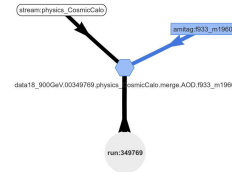




Status of E1 Core & U1



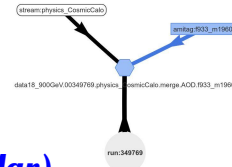
- Import
- Access
- Problems
- New Use Cases



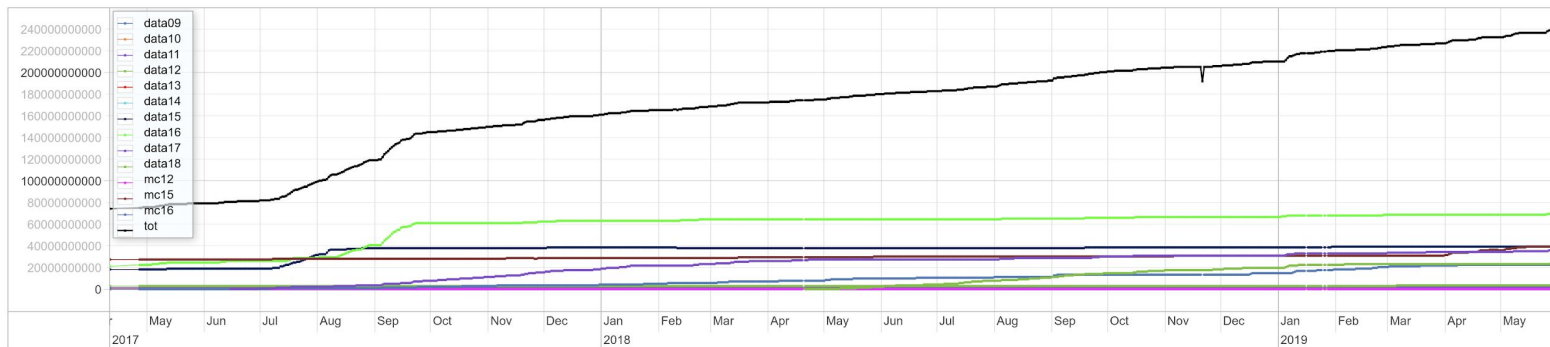
Status - Import

More than 242 000 000 000 event records available ! (was 224 000 000 000 in Mar)

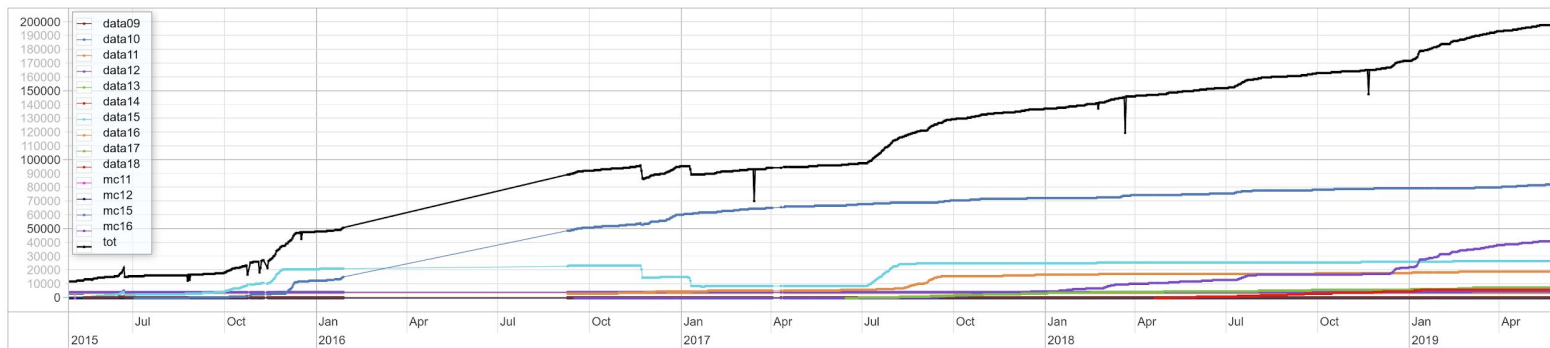
More than 199 000 datasets ! (was 188 000 in Mar)



Events (242106714907 @ 2019-06-03)

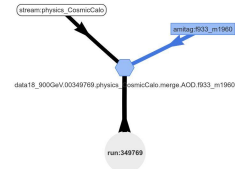


Datasets (199649 @ 2019-06-03)

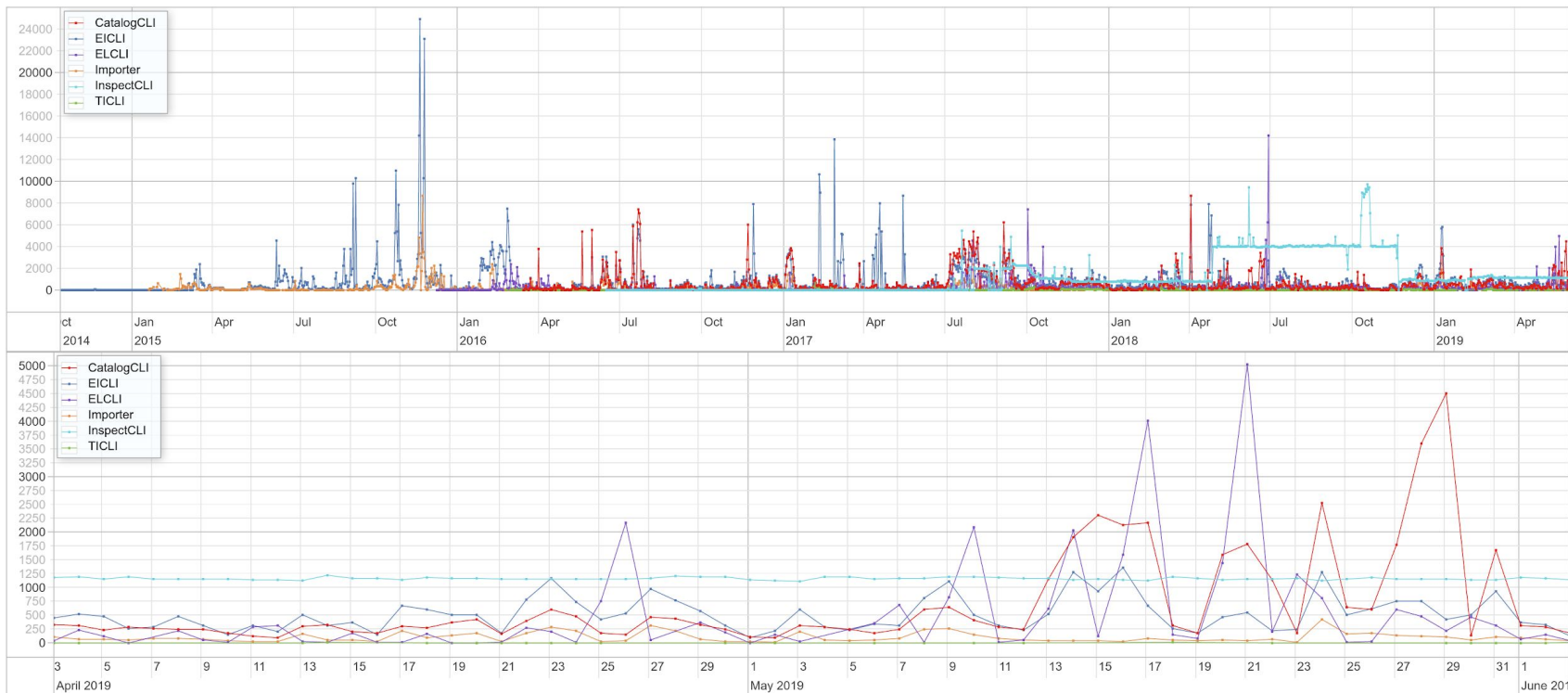




Status - Access

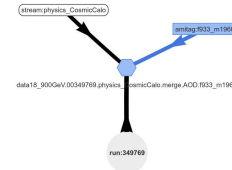


Daily Access statistics (4091448 @ 2019-06-03)





Problems



- Tomcat gets stuck (about 2x in a year)
 - Too many open files, ... due to interrupted sessions
 - Fix: restart periodically
- Some duplication reports “strange”
 - For more diverse cases (many different multiplicities)
- Catalog search doesn't work for several different terms of one variable (with OR or AND)
 - By design: query creates a pattern, which it compares to data
 - Work around: use regexp

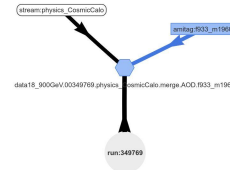
Note: When **any** information about a Dataset changes, all checks (multievents,...) and generated tables (overlaps, statistics,...) are re-done. That may be sometimes unnecessary, but it's done to be sure not to miss any change.



New Use Cases

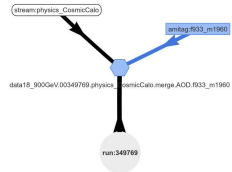
Just Some Random Ideas

- Requested:
 - How evolve duplicated events between stages (EVNT-HITS) ?
- What about “higher level” statistics ?
 - N-times overlaps ? (computationally difficult)
 - Correlations between datasets contents
- Structure data to make such analysis easy ?
 - To open them to AI (non-spacial data adaptive ANN) ?
 - To search for trigger “patterns”.
 - To use ANN to deliver “Query Spaces”.





Info



*How much should we improve the current system ?
(While we are working on the completely different one)*

Service: <https://atlas-event-index.cern.ch/EIHadoop>

Home: <https://atlas-event-index.cern.ch>

FAQ: <https://atlas-event-index.cern.ch/doc/faq>

Web Service Help: https://docs.google.com/presentation/d/17tANiuNa1k7DqEYWkjDncd1oF0jZqFQsCDFHQ_1dRYY/edit?usp=sharing

GIT: <https://gitlab.cern.ch/atlas-event-index/Atlas-Event-Index-Core.git>

Questions & Comments: <mailto:Julius.Hrivnac>